

The Characteristics of Raindrop Size Distribution and Drop Shape Relation in Typhoon Systems from 2D-Video Disdrometer and NCU C-Band Polarimetric Radar.

Wei-Yu Chang Tai-Chi Chen Wang Pay-Liam Lin
National Central University

Abstract

The Drop Size Distribution (DSD) and Drop Shape Relation (DSR) characteristics of different precipitation systems have been investigated in numerous regions. However, the characteristics of DSDs and DSRs in typhoon systems are still poorly documented despite typhoons cause lots of damages all over the world. In this present research, authors focus on the DSDs and DSRs observed in typhoon systems in northern part of Taiwan in Western Pacific and compare with the DSDs retrieved from the polarimetric measurements. There were 13 typhoon cases DSD data were collected and analyzed. The time series of the vertical profile of reflectivity and the surface DSDs of two rainband cases were fully illustrated to understand the evolution of the DSDs and its relation with the vertical development of the reflectivity. The drop shape relation (DSR) in typhoon system was also derived and compared with the DSR in non-typhoon system. The result indicated that the raindrops in typhoon system were slightly more spherical than the non-typhoon condition. The DSDs retrieved from one typhoon case observed by NCU-C-band dual-polarization radar, together with another two disdrometer derived DSDs were compared with the DSDs of the continental and maritime convection systems. The results indicated that in the scatter diagram of the normalized intercepts and mass weighted diameters, the cluster from typhoon systems is uniquely located in between of the other two clusters from the continental and maritime systems.

1. Introduction :

The oblateness and the raindrop size distribution (DSD) have great variation in different types of rainfall condition. The shape and DSDs can determine not only the different moment of rainfall integral parameters but also the measurements of polarimetric radar. Through the calculation from DSDs, the coefficient N_0 , μ , Λ of Gamma distribution can be retrieved. (Ulbrich 1983) The median volume diameter (D_m), mass-weighted diameter (D_m) and the normalized intercept (N_w) were also derived through the coefficient N_0 , μ , Λ . From year 2001 to 2005, we had analyzed five years DSDs data from 2d-video disdrometer. The characteristics of DSDs in 13 typhoon systems were obtained through statistics.

2. DSDs from 2d-video disdrometer :

The vertical profile of reflectivity and the rainfall rate indicated three different types of precipitation systems: the weak stratiform, stratiform and the convection systems. (Fig.1)The DSDs in weak stratiform systems had small maximum diameter (2~3mm) and relatively fewer small to median diameter of raindrops with lower reflectivity (less than 25 dBZ), the stratiform systems had bigger maximum diameter (2.5~3.5mm) and relatively more small to median diameter of raindrops with higher reflectivity (30~40 dBZ), and the convection systems had the biggest maximum diameter (3.5~4.5mm) and the most small to median diameter of raindrops with distinct strong

reflectivity column.

Thus, the scatter-plot of D_m and the log-scale N_w were used to illustrate the characteristics of DSDs in

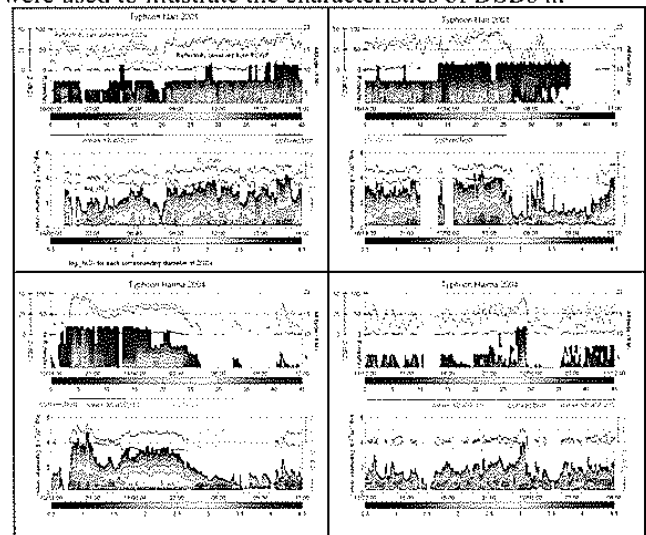


Fig.1: The time series of rainfall rate (green line), reflectivity calculated from DSDs (red line) and observed from RCWF (blue line) and vertical profile of reflectivity (color shaded) in (a), (b), (e) and (f). The D_m (red line), $\log_{10}(N_w)$ (black line) and DSDs (color shaded) in (b), (d), (g), and (h).

different rainfall rate in typhoon systems. In Fig.2, the average D_m and log-scale N_w were calculated for each 10 mm/hr rainfall rate. For the rainfall rate less than 10

mm/hr which indicating stratiform precipitation, showed that the stratiform precipitation in typhoon Haima (Nari) had higher (lower) N_w and smaller (bigger) D_m . On the other hand, in the convection precipitation (rainfall rate greater than 10 m/hr), the D_m and N_w of DSDs in typhoon Haima 2004 showed higher N_w and smaller D_m for each corresponding rainfall rate comparing to typhoon Nari 2001. And the D_m increased with the increasing rainfall rate as typhoon Nari 2001, however, the D_m remained about 2.2 mm when rainfall rate greater 60 mm/hr. The results showed that the heavy precipitations were mainly composed by the concentration of raindrops of DSDs rather than the giant diameter of raindrops both in typhoon Nari and Haima. Consequently, the balance of the microphysical process of collision-coalescence and breakup in typhoon system may cause the unique constrained D_m value in heavy precipitation.

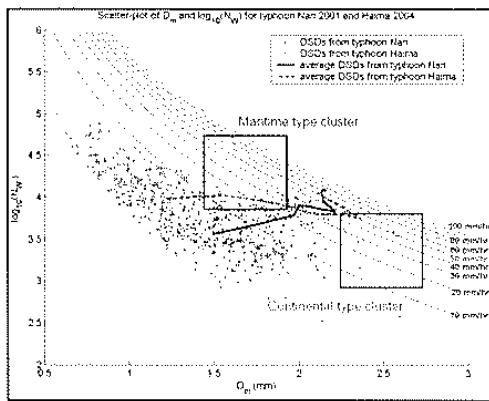


Fig. 2: The scatter-plot of D_m and $\log_{10}(N_w)$ for typhoon Nari 2001 and Haima 2004 with the average D_m and $\log_{10}(N_w)$ for each 10 mm/hr rainfall rate (Nari 2001: black line, Haima 2004 : pink dash line). The black dash line represents the rainfall rate from 10 to 100 mm/hr, blue (red) square represents the maritime (continental) type cluster from Bringi et al. 2003, respectively.

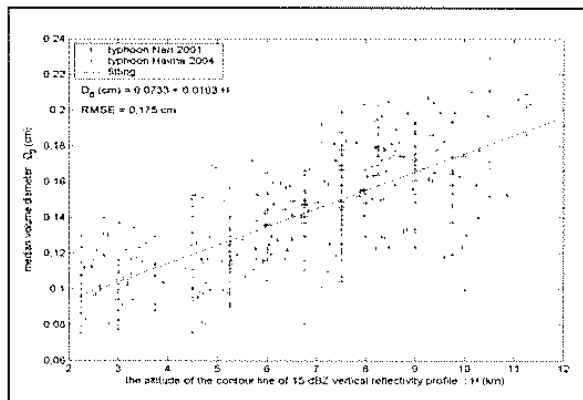


Fig. 3: The scatter-plot of D_0 and the altitude of 15 dBZ contour line of vertical reflectivity. The data from typhoon Nari and Haima are red dots and blue cross, respectively. The black dash line represents the best linear fitting of D_0 and the altitude of 15 dBZ contour

line of vertical reflectivity.

According to the DSDs and RCWF observed reflectivity profile data, we found that the depth of the system had a good correlation with the median volume diameter (D_0) of DSDs. In Fig. 3, the altitude of 15 dBZ contour lines were used as an indicator to represent the depth of the systems, which had a good linear relation with D_0 . The D_0 increased with the increasing of the altitude of 15 dBZ contour lines. Stronger convection systems may provide more collision-coalescence or the melting snow-flaks and graupel from higher altitude maybe the reasons for this linear relation.

3. DSDs retrieval from NCU C-Band polarimetric radar :

The DSDs retrieval from polarimetric radar has been achieved by using constrain-gamma method (μ - Λ relation) and polarimetric measurements: differential reflectivity (Z_{DR}) by Zhang et al. 2001. However, the accuracy of the μ - Λ relation and the drop shape relation (DSR) of raindrops will highly effect the results from the retrieval of DSDs from polarimetric radar, thus, it's important to understand the μ - Λ relation and the DSR in typhoon systems first.

(1) μ - Λ relation in typhoon systems:

In Fig. 4, the scatter-plot of μ and Λ from 13 typhoon systems showed totally different relation comparing to the results of Brandes et al. 2002. The results suggest that μ - Λ relation for typhoon systems were necessary, thus, the μ - Λ relation for typhoon systems were derived to replace the one from Brandes 2004 et al..

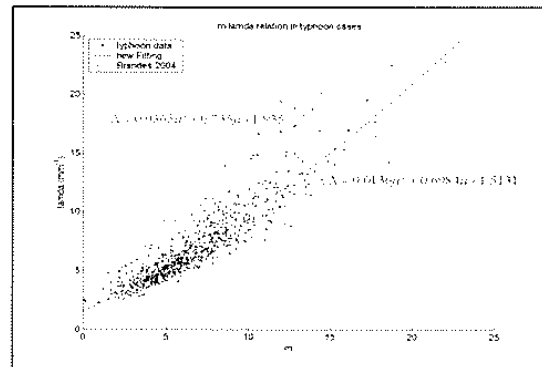


Fig. 4: The scatter-plot of μ and Λ from 13 typhoon systems (black dots), red dash line was from Brandes et al.2004 and the blue line was the new μ - Λ relation for typhoon systems.

(2) DSR of typhoon systems:

In Fig. 5, the axis ratio from 2d-video disdrometer of typhoon systems (Fig. 5(a)) showed that the shape of raindrops were slightly more spherical comparing with non-typhoon systems in low horizontal wind (0~1 m/s) and rainfall rate (0~2 mm/hr) condition (Fig. 5(b)) in the same successive observation period. Both the axis

ratios were also compared with Brandes et al. 2002 and Thurai et al. 2005, the results indicate that the axis ratio in non-typhoon was very similar to the previous two research, but relatively more spherical in typhoon system. The comparisons reveal that the instrumental effect was limited and acceptable.

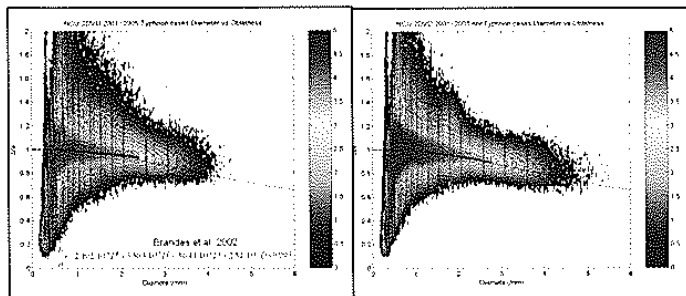


Fig. 5: (a) The axis ratio from typhoon systems, the black line represents the axis ration from Brandes et al. 2002, blue dash line represents the average axis ratio and the color shaded represents the data numbers. (b) same as (a) but in non-typhoon systems with low horizontal wind (0~1 m/s) and precipitation (0~2 mm/hr).

(3) The DSDs retrieval results

Using the constrain-gamma method with new μ - Λ relation from disdrometer, reflectivity, DSR of typhoon system and the differential reflectivity observation from NCU C-Band polarimetric radar, the DSDs below melting level (3.5 km) were retrieved from typhoon Saomai on Aug. 10th, 2006. In Fig. 6, the reflectivity and differential reflectivity raw data were showed in (a) and (b), the retrieved log-scale N_w and D_m were in (c) and (d).

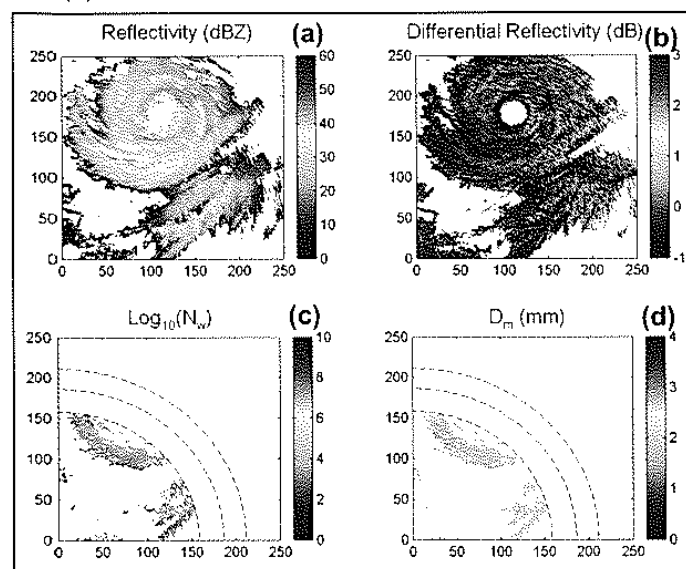


Fig. 6: (a) The reflectivity, (b) differential reflectivity, (c) retrieved N_w in log-scale and (d) retrieved D_m at elevation angle 0.5 degree. The dash line in (c) and (d) represent the altitude 3.5, 4.5 and 5.5 km, respectively.

4. Summary:

The DSDs from typhoon systems indicated that the heavy precipitation was composed of lots of median and small raindrops rather than giant raindrops. The microphysics process of collision-coalescence and breakup may be the main reason for this unique D_m value. The deeper convection systems can provide the environment which favor to produce the DSDs having bigger maximum diameter raindrops. Those environments can provide sufficient collision-coalescence process for the DSDs or the melting of snow-flake or graupel. Nevertheless, the characteristics of DSDs of typhoon systems also indicated that the DSDs of typhoon systems were actually neither maritime type convection systems nor continental type convection systems. The new empirical μ - Λ relationship was applied to the constrain-gamma equation to estimate the DSDs of typhoon system. The results also indicated the DSDs were dominated by the high concentration of small to median raindrops rather than big raindrops, which was consist with the results from surface 2d-video disdrometer.

Reference:

- Brandes, E. A., G. Zhang, and J. Vivekanandan, 2002: Experiments inrainfall estimation with apolarimetric radar in a subtropical environment. *J. Appl. Meteor.*, **41**, 674_685.
- , —, and —, 2004: Drop size distribution retrieval with polarimetric radar: Model and application. *J. Appl. Meteor.*, **43**, 461_475.
- Bringi V. N., V. Chandrasekar, J. Hubbert, E. Gorgucci, W. L. Randeu and M. Schoenhuber. 2003: Raindrop Size Distribution in Different Climatic Regimes from Disdrometer and Dual-Polarized Radar Analysis. *Journal of the Atmospheric Sciences*: Vol. 60, No. 2, pp 354–365.
- Thurai, M., and V. N. Bringi. 2005: Drop Axis Ratios from a 2D-Video Disdrometer. *Journal of Atmospheric and Oceanic Technology*: Vol.22, No. 7, pp. 966–978.
- Ulbrich, C. W., 1983: Natural variations in the analytical form of the raindrop size distribution. *J. Climate Appl. Meteor.*, **22**, 1764–1775.
- Zhang, G., J. Vivekanandan, and E. Brandes, 2001: A method for estimating rain rate and drop size distribution from polarimetric radar measurements. *IEEE Trans. Geosci. Remote Sens.*, **39**, 30–841.